

# LIMA EAST CREEK CATCHMENT LOCAL MANAGEMENT RULES



## 1. Catchment Information

The Lima East Creek flows into the Broken River approximately 5km downstream of Swanpool, which is downstream of Lake Nilahcootie, and encompasses an area of approximately 126 km<sup>2</sup>. The mean annual flow at the bottom of the Lima East Creek catchment is approximately 23,420 ML/yr. Key issues identified within the catchment are barriers to fish migration, stock access, and maintaining a healthy state.

The catchment is bound to the west by the Goulburn catchment, the north by the Lima Creek catchment and to the east by the Broken River catchment. Significant tributaries of Lima Creek East include Moone, Sugarloaf, and Parlous Creeks. The main townships within the catchment are Lima East and Swanpool. The upper catchment of Lima East Creek is made up of the Strathbogies Ranges and is predominantly forested, while the lower catchment is cleared and the main industry is dryland farming with some irrigation.

## 2. Management of Licences

Restriction Triggers for each stage of restriction.

Restriction Stages	Trigger Values for Introduction of Next Stage of Restriction	Percent Restrictable Demand
Stage 5 (Suspension)	<= 5 ML/day	100%

**Note:** Restrictions are implemented during dry periods prior to flows reducing to the trigger value. For example, if a river flow is reducing rapidly, a higher stage or suspension will be put in place before the trigger level is reached to provide for adequate flow for domestic and stock use and the environment.

## 3. Compliance Point

There is a surface water monitoring station located downstream of the Midland Highway. The station is called Lima Creek @ d/s Midland Highway Swanpool (Station No. 404246).

## 4. Licences

Licence Allocation in Lima East Creek and Tributaries

Licence Type	Number of Licences	Volume (ML)
Irrigation	14	176.2
Registered Dams	2	69
<b>Total</b>	<b>16</b>	<b>245.2</b>

## 5. Additional Information

Stream codes and sustainable diversion limit zones are provided within this document for identification purposes when discussing the catchment diversion management with Goulburn-Murray Water Officers.

### Stream Codes

Stream codes used in the management of the Lima East Creek and Tributaries:  
4040205

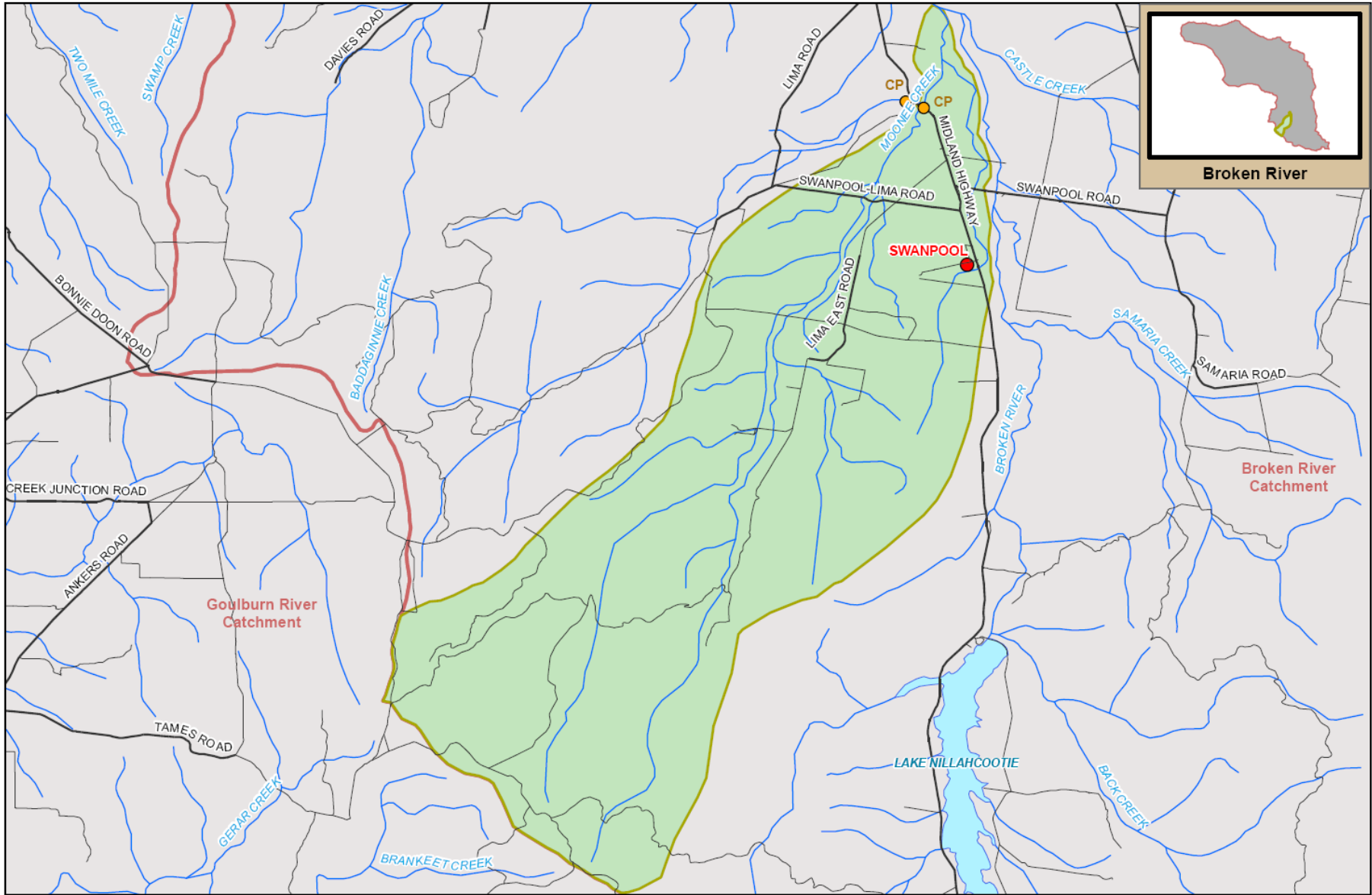
### Sustainable Diversion Limit zones

Sustainable Diversion Limit zones used in the management of surface water trade within the Lima East Creek catchment:  
4040101      4040102

For general information call or visit

**1800 013 357**

**www.g-mwater.com.au**



**Broken River**

**Broken River  
Catchment**

**Goulburn River  
Catchment**

**LIMA CREEK EAST SUB CATCHMENT**  
Broken River Catchment



TAT-AL09-0054  
26 OCT 09

SCALE AT A4 1:130,000  
0 1 2  
km

The content of this product is provided for information purposes only. No claim is made as to the accuracy or authenticity of the content of the product. In no event will G-MW, its agents, instrumentalities and employees be liable for the accuracy of the information contained within this product nor its use or reliance placed on it. The information used within this product is provided on the basis that all persons accessing the information undertake responsibility for assessing the relevance and accuracy of its content.

