

BACK CREEK CATCHMENT LOCAL MANAGEMENT RULES



1. Catchment Information

The Back Creek flows into the Coliban River at Taradale, and encompasses an area of approximately 75 km². The mean annual flow at the bottom of the Back Creek catchment is approximately 8,950 ML/yr. The North Central River Health Strategy lists the Back Creek as part of the Coliban program area. Key issues identified within the catchment are exotic flora, stock access, water quality, degraded riparian vegetation and introduced fauna.

The catchment is bound to the east by the Campaspe River catchment and the west by the Loddon River catchment. Significant tributaries of Back Creek include Dearden, Cuthbert and Morrison Creeks. The main township within the catchment is Taradale. The catchment is predominantly forested in the middle catchment which is covered by the Waariyarra Nature conservation Reserve. The cleared plains along Back Creek support dryland farming and some viticulture.

2. Management of Licences

Restriction Triggers for each stage of restriction.

Restriction Stages	Trigger Values for Introduction of Next Stage of Restriction	Percent Restrictable Demand
Stage 5 (Suspension)	<=3 ML/Day	100%

Note: Restrictions are implemented during dry periods prior to flows reducing to the trigger value. For example, if a river flow is reducing rapidly, a higher stage or suspension will be put in place before the trigger level is reached to provide for adequate flow for domestic and stock use and the environment.

3. Compliance Point

The Back Creek is visually monitored at Taradale.

4. Licences

Licence Allocation in Back Creek upstream Eppalock Creek and Tributaries

Licence Type	Number of Licences	Volume (ML)
Irrigation	1	2
Registered Farm Dams	18	153
Total	19	155

5. Additional Information

Stream codes and sustainable diversion limit zones are provided within this document for identification purposes when discussing the catchment diversion management with Goulburn-Murray Water Officers.

Stream Codes

Stream codes used in the management of the Back Creek and Tributaries:
4060104

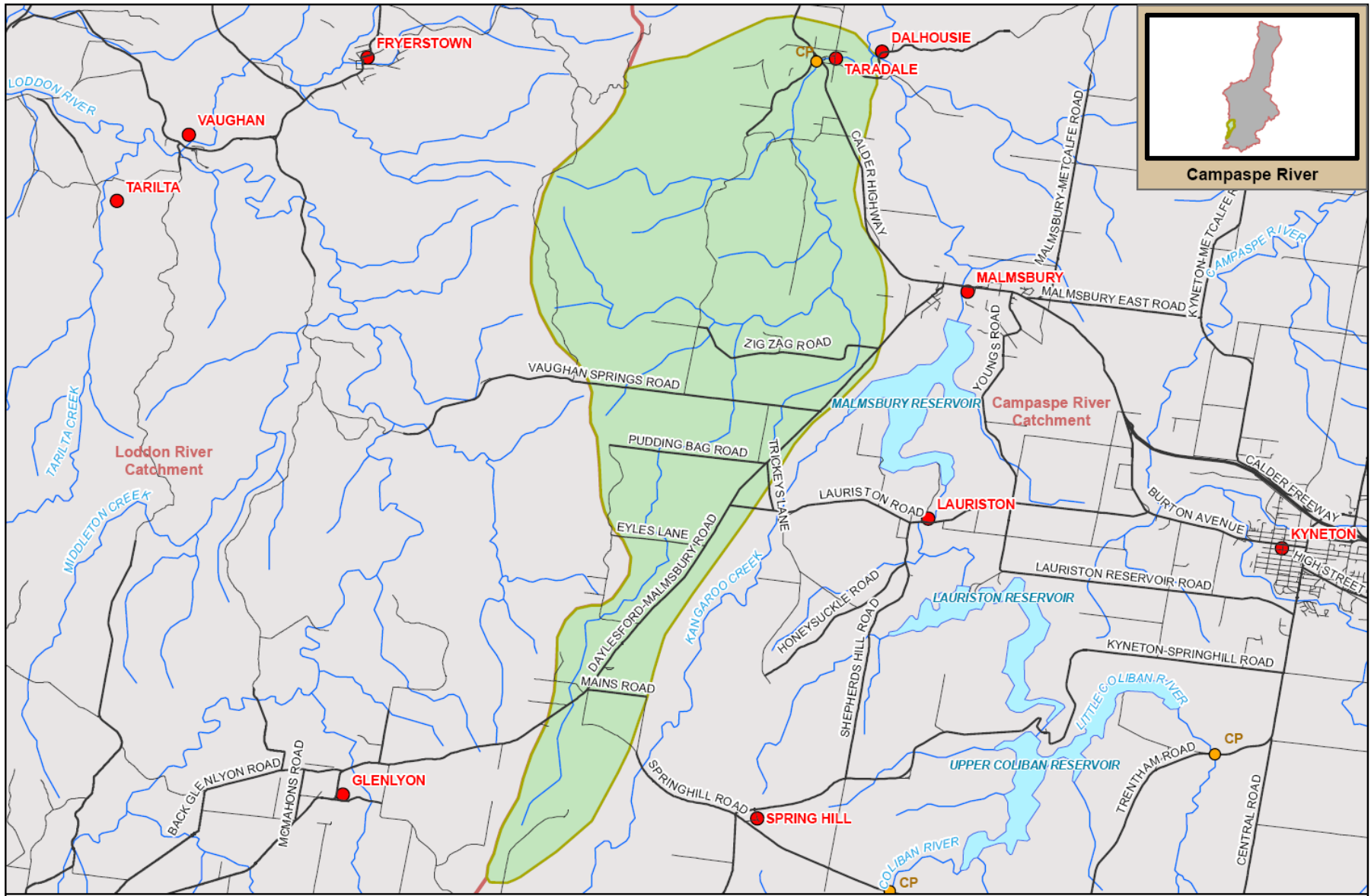
Sustainable Diversion Limit zones

Sustainable Diversion Limit zones used in the management of surface water trade within the Back Creek catchment:
4060106

For general information call or visit

1800 013 357

www.g-mwater.com.au



TAT-AL09-0054
28 OCT 09

SCALE AT A4 1:115,000
0 1 2
km

BACK CREEK SUB CATCHMENT
Campaspe River Catchment

The content of this product is provided for information purposes only. No claim is made as to the accuracy or authenticity of the content of the product. In no event will G.M.W. or its agents, instrumentalities and employees be liable for the accuracy of the information contained within this product nor its use of reliance placed on it. The information used within this product is provided on the basis that all persons accessing the information undertake responsibility for assessing the relevance and accuracy of its content.

