

# BOOSEY CREEK CATCHMENT LOCAL MANAGEMENT RULES



## 1. Catchment Information

The Boosey Creek flows into the Broken Creek approximately 2.5 km downstream of Katamatite and encompasses an area of approximately 672 km<sup>2</sup>. The mean annual flow at the bottom of the Boosey Creek catchment is approximately 31,480 ML/yr. Key issues identified within the catchment are barriers to fish migration, stock access, water quality SIGNAL and continual dry periods which occur in the Boosey Creek catchment.

The catchment is bound to the south by Mokoan Wetlands, the north by the Muckatah Creek catchment, the east by the Broken Creek Catchment and to the east by the Ovens River catchment. Significant tributaries of Boosey Creek East include Gnarite, Bungeet, Katamatite, and Sandy Creeks. The main townships within the catchment include Tungamah, Lake Rowan, Wilby, and Yerrip. The upper catchment of Boosey Creek is predominantly a cleared catchment, with the primary industry being dryland farming.

## 2. Management of Licences

Restriction Triggers for each stage of restriction.

Restriction Stages	Trigger Values for Introduction of Next Stage of Restriction	Percent Restrictable Demand
Stage 5 (Suspension)	<= 5 ML/day	100%

**Note:** Restrictions are implemented during dry periods prior to flows reducing to the trigger value. For example, if a river flow is reducing rapidly, a higher stage or suspension will be put in place before the trigger level is reached to provide for adequate flow for domestic and stock use and the environment.

## 3. Compliance Point

The stream is visually assessed at Katamatite.

## 4. Licences

Licence Allocation in Boosey Creek and Tributaries

Licence Type	Number of Licences	Volume (ML)
Irrigation	18	282.8
Registered Dams	21	315
<b>Total</b>	<b>39</b>	<b>597.8</b>

## 5. Additional Information

Stream codes and sustainable diversion limit zones are provided within this document for identification purposes when discussing the catchment diversion management with Goulburn-Murray Water Officers.

### Stream Codes

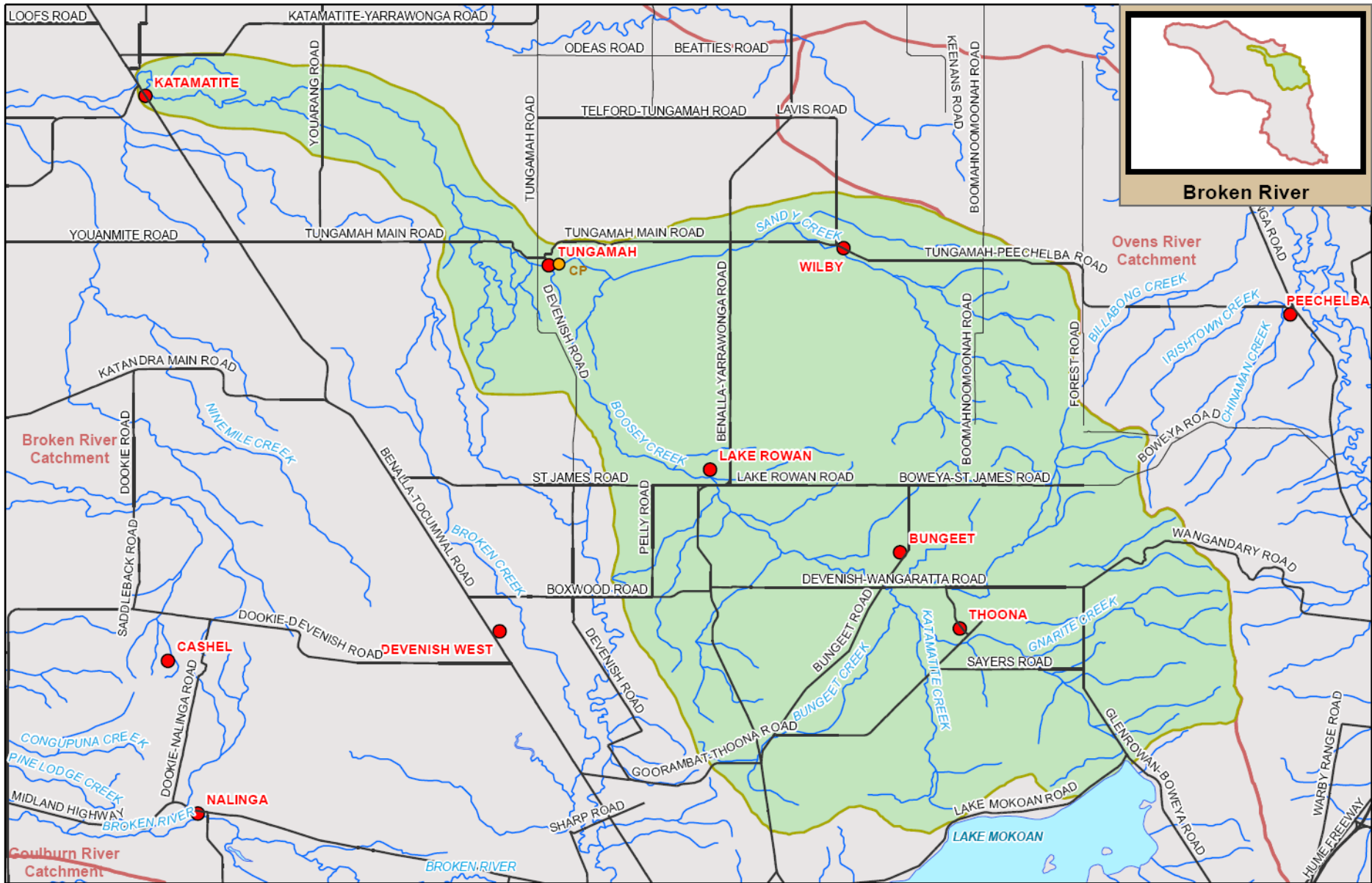
Stream codes used in the management of the Boosey Creek and Tributaries:  
4040600

### Sustainable Diversion Limit zones

Sustainable Diversion Limit zones used in the management of surface water trade within the Boosey Creek catchment: 4040401, 4040402, 4040403, 4040404, 4040405

For general information call or visit  
**1800 013 357**

[www.g-mwater.com.au](http://www.g-mwater.com.au)



**Broken River**

**Ovens River Catchment**

**Broken River Catchment**

**Goulburn River Catchment**



GMW-11-230  
18 NOV 11

SCALE AT A4 1:250,000



**BOOSEY CREEK SUB CATCHMENT**  
Broken River Catchment

The content of this product is provided for information purposes only. No claim is made as to the accuracy or authenticity of the content of the product. In no event will GWM, its agents, instrumentalities and employees be liable for the accuracy of the information contained within this product nor its use or reliance placed on it. The information used within this product is provided on the basis that all persons accessing the information undertake responsibility for assessing the relevance and accuracy of its content.  
2:2011\_Products/GMW-11-230/GMW-11-203 Boosey Creek Sub CatchmentC.mxd

