

# CAMPBELLS CREEK CATCHMENT LOCAL MANAGEMENT RULES



## 1. Catchment Information

The Campbells Creek flows into the Loddon River at Guildford, and encompasses an area of approximately 41 km<sup>2</sup>. The mean annual flow at the bottom of the Campbells Creek catchment is approximately 13,190 ML/yr. The North Central River Health Strategy lists the Upper Loddon Program Area as a priority area, due to environmental significance. Key issues identified within the catchment are instream barriers, exotic flora, stock access, water quality, degraded riparian vegetation and introduced fauna.

The catchment is bound to the east by the Campaspe River catchment and the west by the Loddon River catchment. Significant tributaries of Campbells Creek include Barkers Creek, Forest Creek and Poverty Gully. The main townships within the catchment include Castlemaine and Campbells Creek. The Campbells Creek catchment is predominantly forested through the hills and cleared along the valley flats.

## 2. Management of Licences

Restriction Triggers for each stage of restriction.

Restriction Stages	Trigger Values for Introduction of Next Stage of Restriction	Percent Restrictable Demand
Stage 5 (Suspension)	<=3 ML/Day	100%

**Note:** Restrictions are implemented during dry periods prior to flows reducing to the trigger value. For example, if a river flow is reducing rapidly, a higher stage or suspension will be put in place before the trigger level is reached to provide for adequate flow for domestic and stock use and the environment.

## 3. Compliance Point

Campbells Creek is visually assessed at the compliance point on Eagles Rd, Harcourt.

## 4. Licences

Licence Allocation in Campbells Creek and Tributaries

Licence Type	Number of Licences	Volume (ML)
Irrigation	4	67
Registration	4	41.5
<b>Total</b>	<b>8</b>	<b>108.5</b>

## 5. Additional Information

Stream codes and sustainable diversion limit zones are provided within this document for identification purposes when discussing the catchment diversion management with Goulburn-Murray Water Officers.

### Stream Codes

Stream codes used in the management of the Campbells Creek and Tributaries:  
4071112

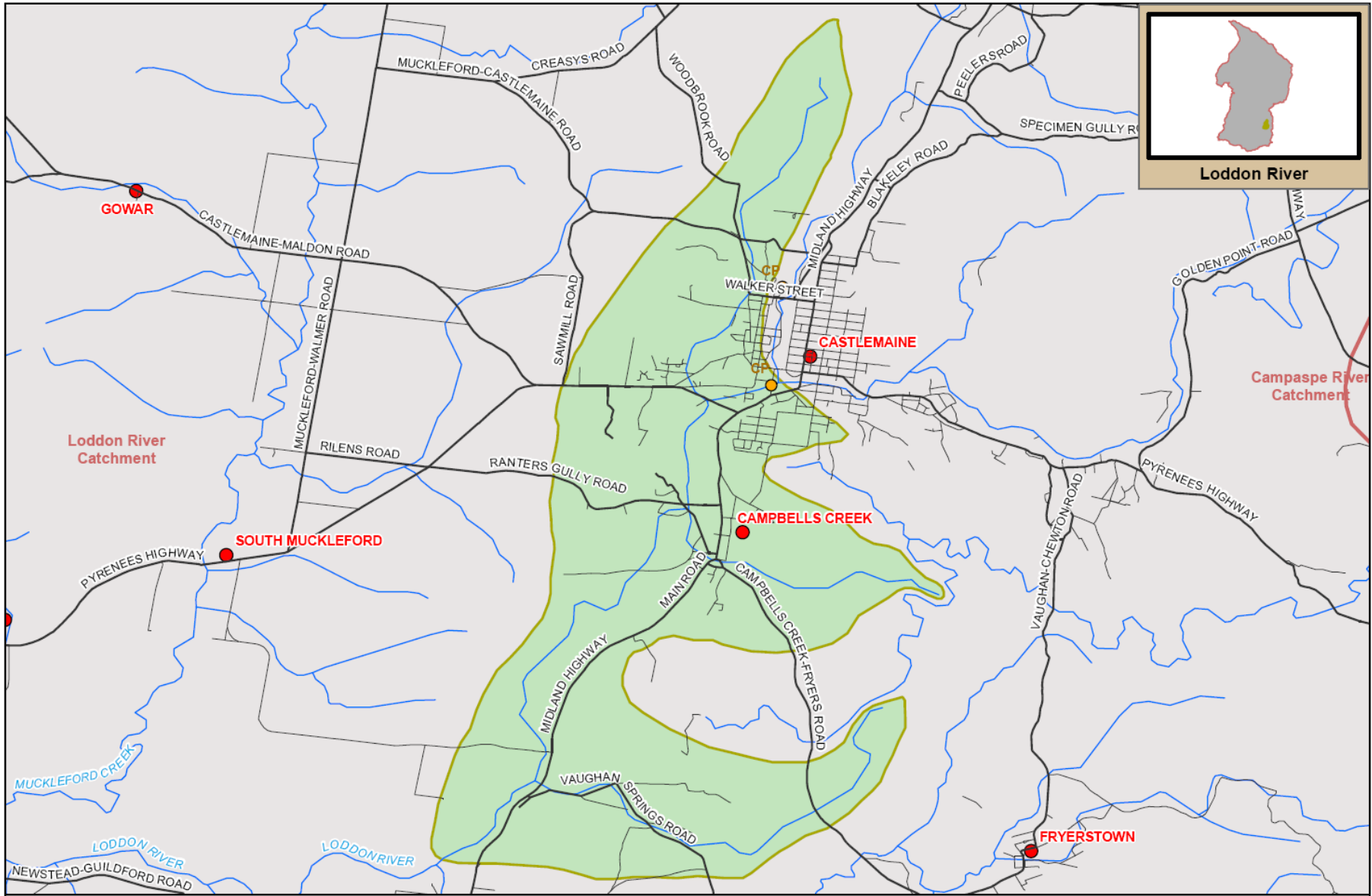
### Sustainable Diversion Limit zones

Sustainable Diversion Limit zones used in the management of surface water trade within the Campbells Creek catchment:  
4070003

For general information call or visit

**1800 013 357**

**[www.g-mwater.com.au](http://www.g-mwater.com.au)**



Loddon River



TAT-AL09-0054  
28 OCT 09

SCALE AT A4 1:80,000  
0 1 2  
km

**CAMPBELLS CREEK SUB CATCHMENT**  
Loddon River Catchment

The content of this product is provided for information purposes only. No claim is made as to the accuracy of authenticity of the content of the product. In no event will G-MW, its agents, instrumentalities and employees be liable for the accuracy of the information contained within this product nor its use or reliance placed on it. The information used within this product is provided on the basis that all persons accessing the information undertake responsibility for assessing the relevance and accuracy of its content.

