

HOLLAND CREEK CATCHMENT LOCAL MANAGEMENT RULES



1. Catchment Information

The Holland Creek flows into the Broken River upstream of Lake Benalla in Benalla and encompasses an area of approximately 445 km². The mean annual flow at the bottom of the Holland Creek catchment is approximately 90,930 ML/yr. The Goulburn Broken Regional River Health Strategy lists the Holland and Ryans Creek catchments as high value assets as it contains Macquarie Perch and is classed as ecologically healthy river. Key issues identified within the catchment are barriers to fish migration, stock access, channel modification and maintaining a healthy state.

The catchment is bound to the north by Lake Mokoan, the west by the Broken River catchment, and the east by the Fifteen Mile Creek Catchment. Significant tributaries of Holland Creek include Ryans, Sam, Watchbox, Stockyard, Spring, and Bog Creeks. The main townships within the catchment include Tatong, Toombullup and Molyullah. The upper catchment of Holland Creek is predominantly a forested catchment, while the lower catchment is cleared with the main industries being dryland farming and some dairies.

2. Management of Licences

Restriction Triggers for each stage of restriction.

Restriction Stages	Trigger Values for Introduction of Next Stage of Restriction	Percent Restrictable Demand
Stage 5 (Suspension)	<= 10 ML/day	100%

Note: Restrictions are implemented during dry periods prior to flows reducing to the trigger value. For example, if a river flow is reducing rapidly, a higher stage or suspension will be put in place before the trigger level is reached to provide for adequate flow for domestic and stock use and the environment.

3. Compliance Point

This stream is assessed at Emu Bridge Road, which is downstream of the confluence of Ryans and Hollands Creek. This is done using the surface water monitoring station which is called Holland Creek @ Kelfeera (404207).

4. Licences

Licence Allocation in Holland Creek and Tributaries

Licence Type	Number of Licences	Volume (ML)
Irrigation	81	548.5
Register Dams	16	660
Total	97	1208.5

5. Additional Information

Stream codes and sustainable diversion limit zones are provided within this document for identification purposes when discussing the catchment diversion management with Goulburn-Murray Water Officers.

Stream Codes

Stream codes used in the management of the Holland Creek and Tributaries:

4040225 4040240 4040245

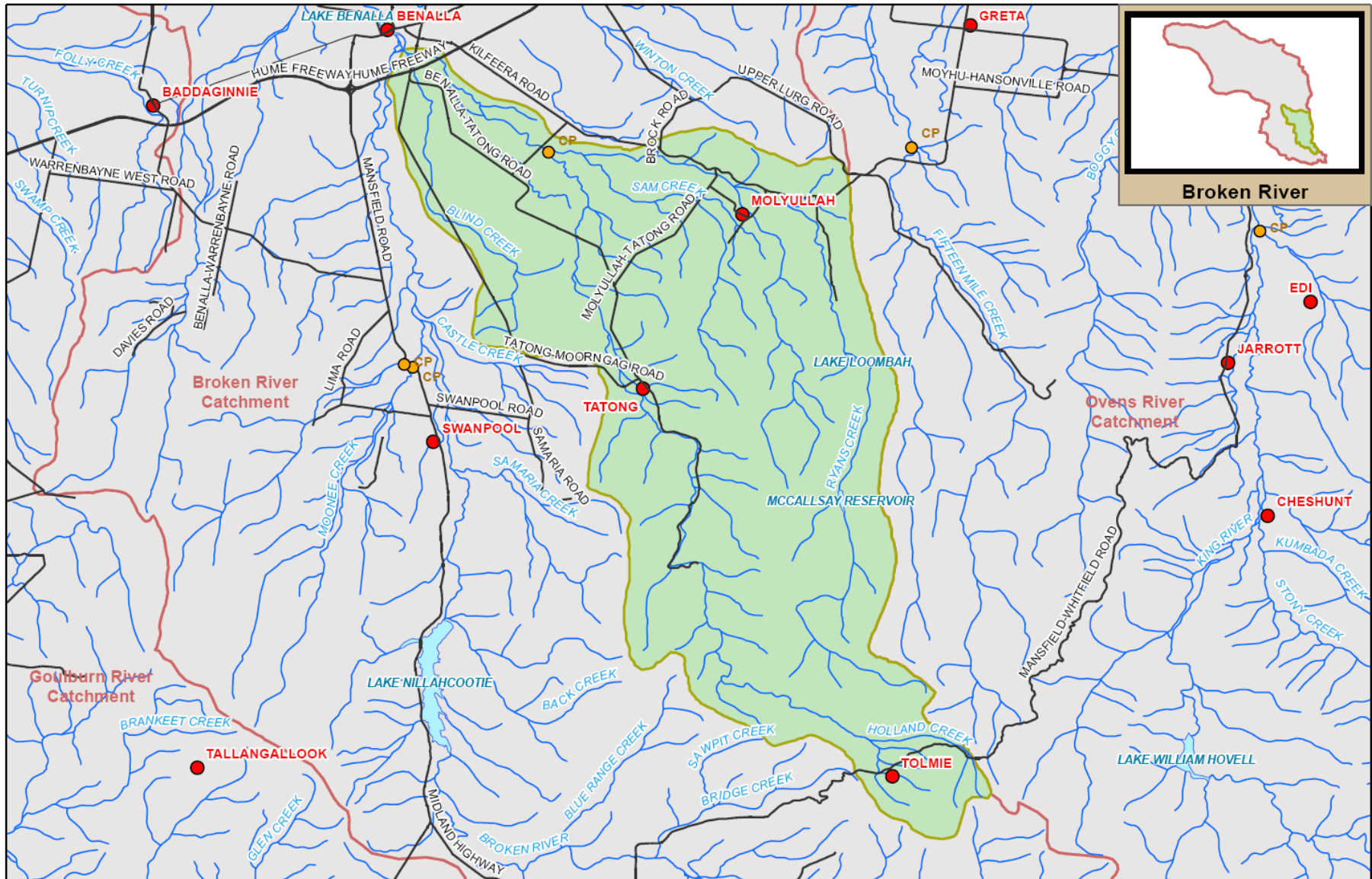
Sustainable Diversion Limit zones

Sustainable Diversion Limit zones used in the management of surface water trade within the Holland Creek catchment:

4040201 4040202 4040203
4040204 4040205

For general information call or visit
1800 013 357

www.g-mwater.com.au



Broken River