

HURDLE CREEK CATCHMENT LOCAL MANAGEMENT RULES



1. Catchment Information

The Hurdle Creek flows into the King River, approximately 4 km upstream of the Oxley township, and encompasses an area of approximately 171 km². The mean annual flow at the bottom of the Hurdle Creek catchment is approximately 39,080 ML/yr. The North East Regional River Health Strategy lists the Lower King River Tributaries Management Unit as it contains significant environmental values including Mountain Galaxis and River Blackfish. Key issues identified within the catchment are bank erosion, bed instabilities, water quality, exotic flora, stock access and degraded riparian vegetation.

The catchment is bound to the east by the Buffalo River catchment and the west by the Meadow Creek catchment. The Hurdle Creek catchment is predominantly cleared along the creek flats and forested along the mountain ranges. Industry within the catchment includes dairy and dryland farming.

2. Management of Licences

Restriction Triggers for each stage of restriction.

Restriction Stages	Trigger Values for Introduction of Next Stage of Restriction	Percent Restrictable Demand
Stage 1 (Roster)	10 ML/day	0%
Stage 3	5 ML/day	50%
Stage 5 (Suspension)	<=2 ML/day	100%

Note: Restrictions are implemented during dry periods prior to flows reducing to the trigger value. For example, if a river flow is reducing rapidly, a higher stage or suspension will be put in place before the trigger level is reached to provide for adequate flow for domestic and stock use and the environment.

3. Compliance Point

There is a surface water monitoring station located on Allans Lane, which is Hurdle Creek @ Bobinawarra Creek (Station No. 403224).

4. Licences

Licence Allocation in Hurdle Creek and Tributaries

Licence Type	Number of Licences	Volume (ML)
Irrigation	25	621.8
Registered Dams	14	522
Total	39	1143.8

5. Additional Information

Stream codes and sustainable diversion limit zones are provided within this document for identification purposes when discussing the catchment diversion management with Goulburn-Murray Water Officers.

Stream Codes

Stream codes used in the management of the Hurdle Creek and Tributaries:
4035220

Sustainable Diversion Limit zones

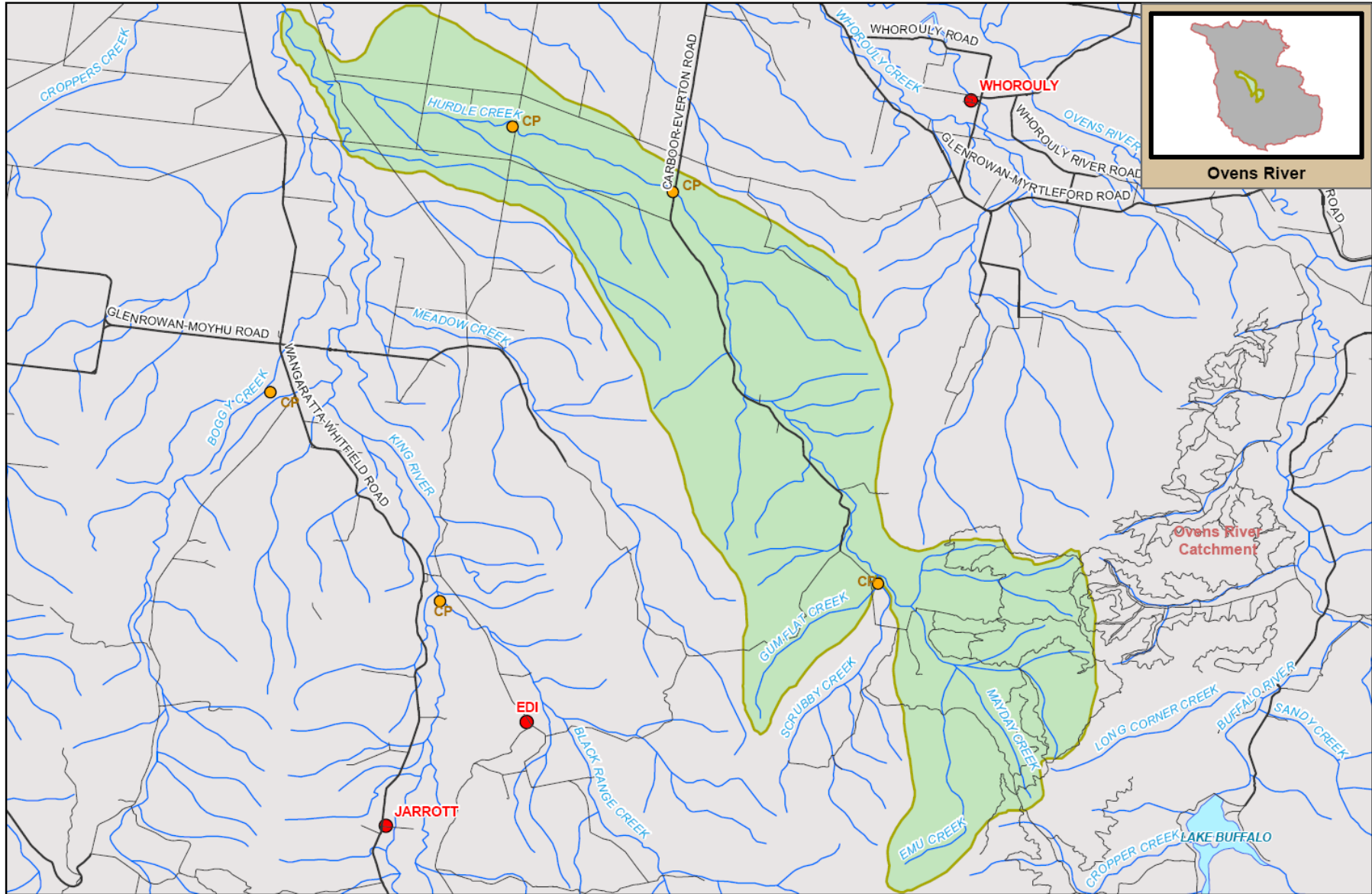
Sustainable Diversion Limit zones used in the management of surface water trade within the Hurdle Creek catchment:

4030717 4030718 4030719

For general information call or visit

1800 013 357

www.g-mwater.com.au



Ovens River

Ovens River Catchment



TAT-AL09-0054
28 OCT 09

SCALE AT A4 1:160,000
0 1 2 3 4 km

HURDLE CREEK SUB CATCHMENT
Ovens River Catchment

The content of this product is provided for information purposes only. No claim is made as to the accuracy or authenticity of the content of the product. In no event will G-MW, its agents, instrumentalities and employees be liable for the accuracy of the information contained within this product nor for its use or reliance placed on it. The information used within this product is provided on the basis that all persons accessing the information undertake responsibility for assessing the relevance and accuracy of its content.

