

# INDI RIVER CATCHMENT LOCAL MANAGEMENT RULES



## 1. Catchment Information

The Indi River flows into the Murray River downstream of the junction with the Swampy Plain River, and encompasses an area of approximately 1045 km<sup>2</sup>. The mean annual flow at the bottom of the Indi River catchment is approximately 449,070 ML/yr. The North East Regional River Health Strategy lists the Upper River Murray Tributaries Management Unit as it contains significant environmental values, including Alpine Spiny Cray, Mountain Galaxias and River Blackfish. Key issues identified within the catchment are exotic flora, stock access, degraded water quality and degradation of riparian vegetation.

The Indi River catchment is predominantly forested in the upper and middle catchments, and is covered by the Alpine National Park. Significant tributaries of the Indi River include Biggara, Surveyors, Little Bunroy, Spring, Buckwong, Omeo and Limestone Creeks. Agriculture is extensive in the valley floors of the Indi River and its tributaries. Restrictions and rostering of the Indi River is done in consultation with New South Wales Water authorities.

## 2. Management of Licences

Restriction Triggers for each stage of restriction.

Restriction Stages	Trigger Values for Introduction of Next Stage of Restriction	Percent Restrictable Demand
Stage 1 (Roster)	165 ML/day	0%
Stage 2	135 ML/day	25%
Stage 3	110 ML/day	50%
Stage 4	90 ML/day	75%
Stage 5 (Suspension)	<=50 ML/day	100%

**Note:** Restrictions are implemented during dry periods prior to flows reducing to the trigger value. For example, if a river flow is reducing rapidly, a higher stage or suspension will be put in place before the trigger level is reached to provide for adequate flow for domestic and stock use and the environment.

## 3. Compliance Point

The Indi River is monitored at the gauging station, River Murray @ Biggara (Station No. 401012). This flow rating is used in managing the restrictions on the Indi River and tributaries.

## 4. Licences

Licence Allocation in Indi River and Tributaries

Licence Type	Number of Licences	Volume (ML)
Irrigation	9	1319
Registered Dam	1	6
<b>Total</b>	<b>10</b>	<b>1325</b>

## 5. Additional Information

Stream codes and sustainable diversion limit zones are provided within this document for identification purposes when discussing the catchment diversion management with Goulburn-Murray Water Officers.

### Stream Codes

Stream codes used in the management of the Indi River and Tributaries:

4015124      4015188

### Sustainable Diversion Limit zones

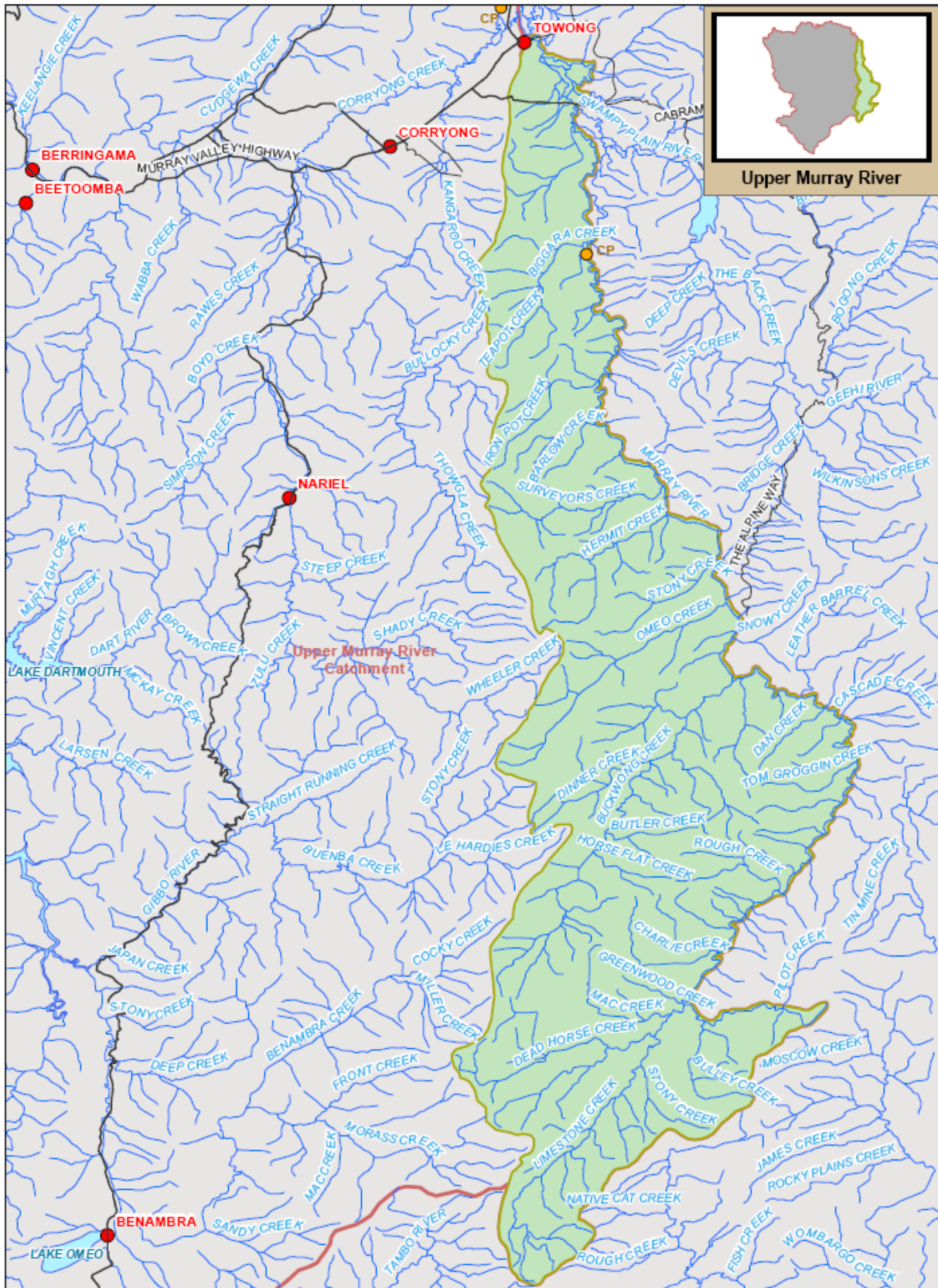
Sustainable Diversion Limit zones used in the management of surface water trade within the Indi River catchment:

4010913, 4010914, 4010915, 4010916, 4010917, 4010918, 4010919, 4010920, 4010921, 4010922, 4010923

For general information call or visit

**1800 013 357**

**www.g-mwater.com.au**



Upper Murray River



SCALE AT A4 1:375,000  
 TAT-AL09-0054  
 28 OCT 09

**INDI RIVER SUB CATCHMENT**  
 Upper Murray River Catchment



The content of this product is provided for information purposes only. No claim is made as to the accuracy or authenticity of the content of the product. No event will GAMA, its agents, instrumentalities and employees be liable for the accuracy of the information contained within this product nor its use or reliance placed on it. The information used within this product is provided on the basis that all persons accessing the information undertake responsibility for assessing the relevance and accuracy of its content.

