

JONES CREEK CATCHMENT LOCAL MANAGEMENT RULES



1. Catchment Information

The Jones Creek flows into the Little Coliban River upstream of Tylden, and encompasses an area of approximately 25 km². The mean annual flow at the bottom of the Jones Creek catchment is approximately 4,610 ML/yr. The North Central River Health Strategy lists the Jones Creek as part of the Coliban program area. Key issues identified within the catchment are exotic flora, stock access, water quality, degraded riparian vegetation and introduced fauna.

The catchment is bound to the east by the Campaspe River catchment and the west by the Coliban River catchment. The Jones Creek catchment is predominantly cleared supporting dryland farming.

2. Management of Licences

Restriction Triggers for each stage of restriction.

Restriction Stages	Trigger Values for Introduction of Next Stage of Restriction	Percent Restrictable Demand
Stage 5 (Suspension)	<= 3 ML/Day	100%

Note: Restrictions are implemented during dry periods prior to flows reducing to the trigger value. For example, if a river flow is reducing rapidly, a higher stage or suspension will be put in place before the trigger level is reached to provide for adequate flow for domestic and stock use and the environment.

3. Compliance Point

The Jones Creek is visually assessed at Bloomfields Lane in Tylden and managed to 3 ML/Day.

4. Licences

Licence Allocation in Jones Creek and Tributaries

Licence Type	Number of Licences	Volume (ML)
Irrigation	9	114.5
Total	9	114.5

5. Additional Information

Stream codes and sustainable diversion limit zones are provided within this document for identification purposes when discussing the catchment diversion management with Goulburn-Murray Water Officers.

Stream Codes

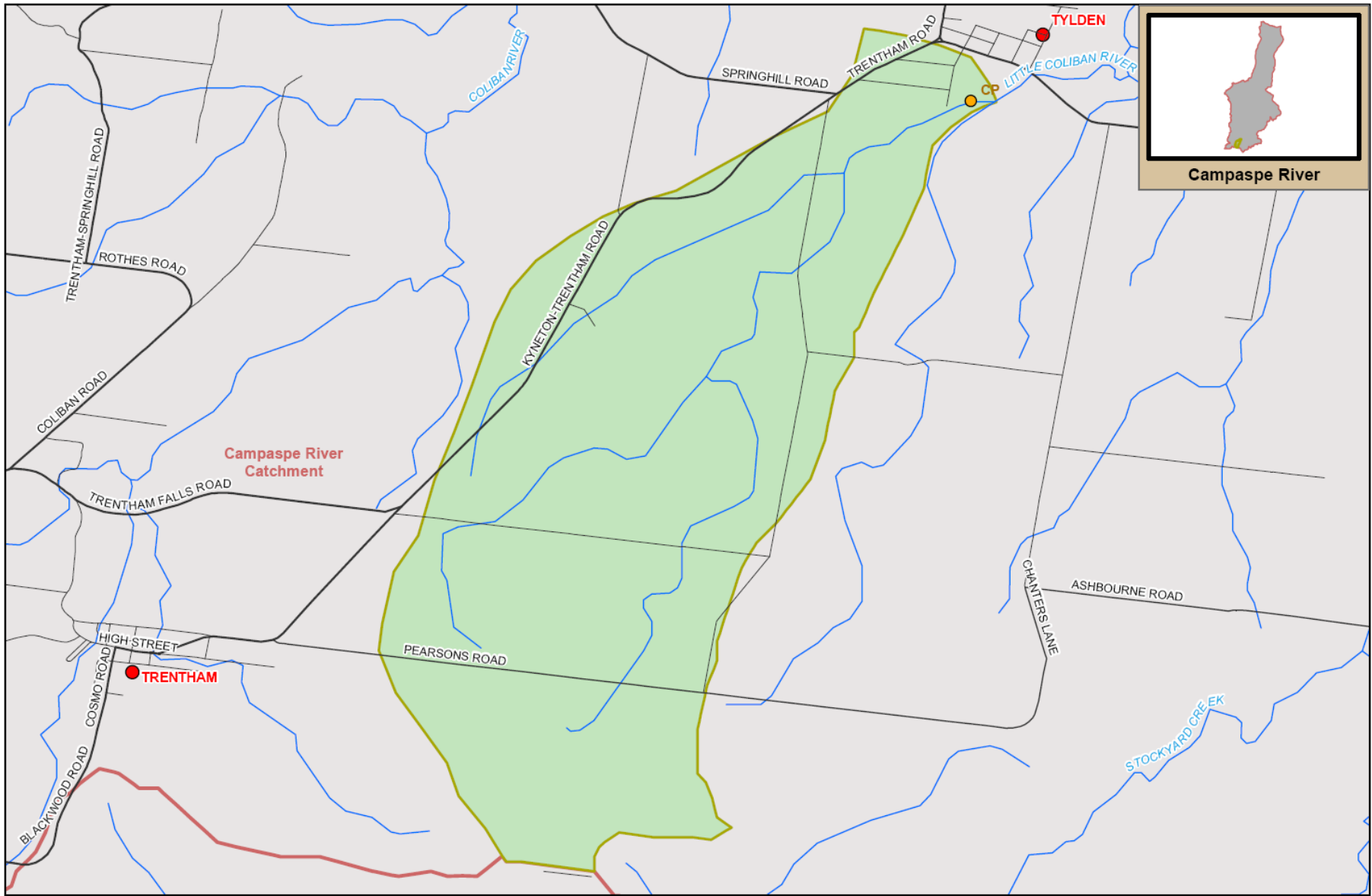
Stream codes used in the management of the Jones Creek and Tributaries:
4060120

Sustainable Diversion Limit zones

Sustainable Diversion Limit zones used in the management of surface water trade within the Jones Creek catchment:
4060102

For general information call or visit
1800 013 357

www.g-mwater.com.au



Campaspe River



TAT-AL09-0054
26 OCT 09

SCALE AT A4 1:55,000
0 1 km

JONES CREEK SUB CATCHMENT
Campaspe River Catchment

The content of this product is provided for information purposes only. No claim is made as to the accuracy or authenticity of the content of the product. In no event will G-MW, its agents, instrumentalities and employees be liable for the accuracy of the information contained within this product nor its use or reliance placed on it. The information used within this product is provided on the basis that all persons accessing the information undertake responsibility for assessing the relevance and accuracy of its content.

