

# MIDDLE CREEK CATCHMENT LOCAL MANAGEMENT RULES



## 1. Catchment Information

The Middle Creek flows into the Kiewa River upstream of Bandiana, and encompasses an area of approximately 72 km<sup>2</sup>. The mean annual flow at the bottom of the Middle Creek catchment is approximately 11,180 ML/yr. The North East Regional River Health Strategy lists the Wodonga Waterways Management Unit as a high value asset due to its significant environmental values. Key issues identified are lateral instabilities, channelisation, exotic flora, degraded riparian vegetation and wetland connectivity.

The Middle Creek Catchment is predominantly cleared, apart from the southern edge of the catchment which makes up the Baranduda Regional Park. Industry within catchment includes some small scale irrigation, and dryland farming. Flows in Middle Creek are seasonal, with winter flows and low to zero flows during the summer. The catchment is bound to the south by the Yackandandah Creek catchment and the east by the Kiewa River catchment. The main township within the catchment is Bandiana and Baranduda.

## 2. Management of Licences

Restriction Triggers for each stage of restriction.

Restriction Stages	Trigger Values for Introduction of Next Stage of Restriction	Percent Restrictable Demand
Stage 5 (Suspension)	<=5 ML/day	100%

**Note:** Restrictions are implemented during dry periods prior to flows reducing to the trigger value. For example, if a river flow is reducing rapidly, a higher stage or suspension will be put in place before the trigger level is reached to provide for adequate flow for domestic and stock use and the environment.

## 3. Compliance Point

Middle Creek is visually assessed at the Kiewa Valley Highway (Wodonga), which is 2km upstream of its confluence with the Kiewa River.

## 4. Licences

Licence Allocation in Middle Creek and Tributaries

Licence Type	Number of Licences	Volume (ML)
Irrigation	15	81.4
Registered Dams	3	38
<b>Total</b>	<b>18</b>	<b>119.4</b>

## 5. Additional Information

Stream codes and sustainable diversion limit zones are provided within this document for identification purposes when discussing the catchment diversion management with Goulburn-Murray Water Officers.

### Stream Codes

Stream codes used in the management of the Middle Creek and Tributaries:

4020150

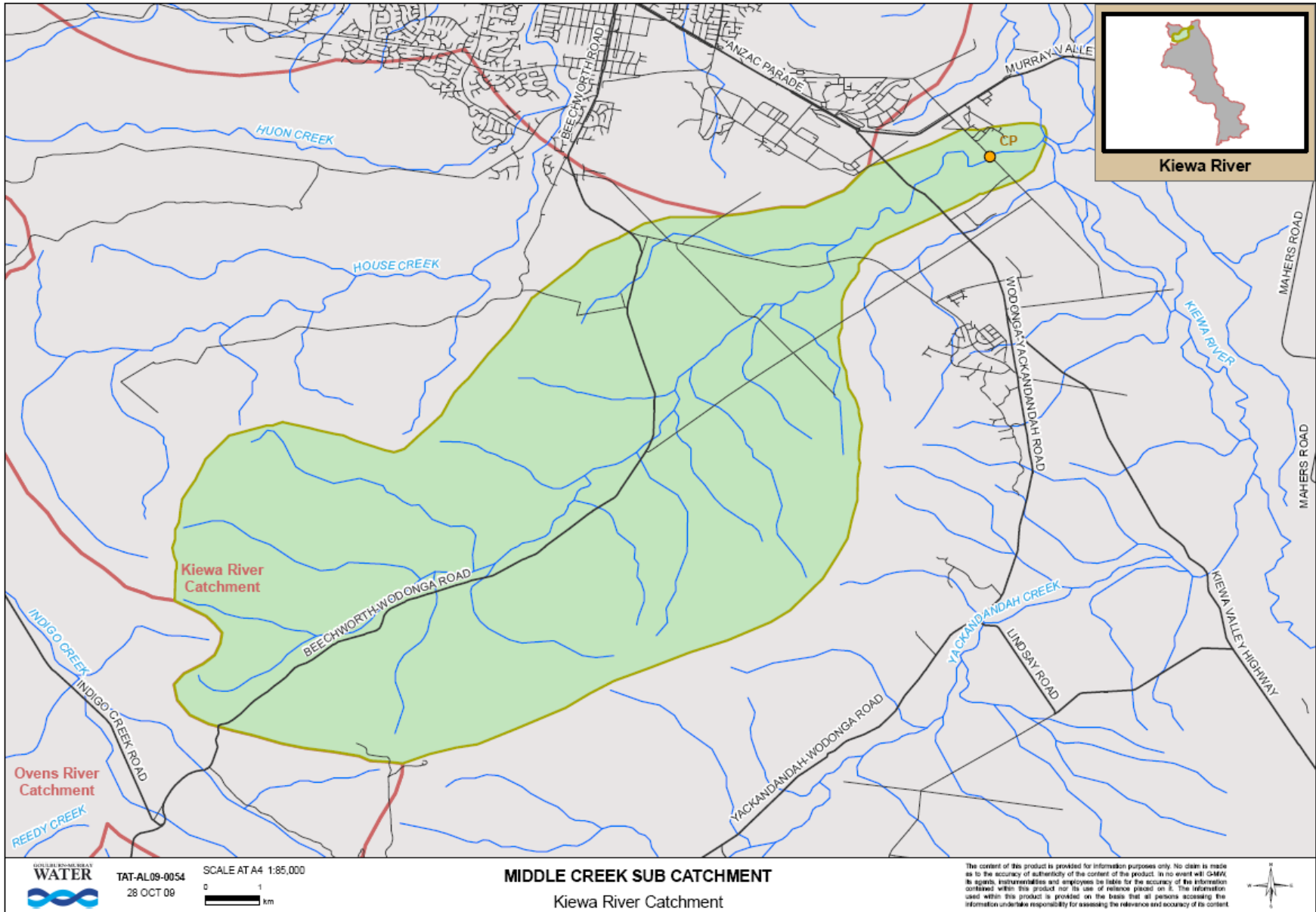
### Sustainable Diversion Limit zones

Sustainable Diversion Limit zones used in the management of surface water trade within the Middle catchment:

4020501      4020502

For general information call or visit  
**1800 013 357**

[www.g-mwater.com.au](http://www.g-mwater.com.au)



**Kiewa River**

**Kiewa River Catchment**

**Ovens River Catchment**

**WATER**  
TAT-AL09-0054  
28 OCT 09

SCALE AT A4 1:85,000  
0 1 km

**MIDDLE CREEK SUB CATCHMENT**  
Kiewa River Catchment

The content of this product is provided for information purposes only. No claim is made as to the accuracy or authenticity of the content of the product. In no event will GMR, its agents, instrumentalities and employees be liable for the accuracy of the information contained within this product nor its use or reliance placed on it. The information used within this product is provided on the basis that all persons accessing the information undertake responsibility for assessing the relevance and accuracy of its content.

