

REEDY CREEK TO YELLOW CREEK CATCHMENT LOCAL MANAGEMENT RULES



1. Catchment Information

The Reedy Creek is managed from the top of Reedy Creek to its confluence with Yellow Creek just to the north east of Wangaratta, and encompasses an area of approximately 391 km². The mean annual flow at the bottom of the Reedy Creek catchment is approximately 54,240 ML/yr. The North East Regional River Health Strategy lists the Lower Ovens Tributaries Management Unit as it contains significant environmental values, including Mountain Galaxias and River Blackfish. Key issues identified within the catchment are sediment inputs, degraded water quality, stock access, cultivation, degraded riparian vegetation and channel modification.

The catchment is bound to the south by the Ovens River catchment and the north by the Black Dog Creek catchment. Significant tributaries of Reedy Creek include Clear, Sheep Station, Snake Head, Spring, Rising Sun, and Pound Creek. The main townships within the catchment include Beechworth and Eldorado. The upper region of Reedy Creek is covered by the Chiltern Mt Pilot National Park, while the lower catchment is cleared for dryland farming and some horticulture.

2. Management of Licences

Restriction Triggers for each stage of restriction.

Restriction Stages	Trigger Values for Introduction of Next Stage of Restriction	Percent Restrictable Demand
Stage 5 (Suspension)	<=5 ML/day	100%

Note: Restrictions are implemented during dry periods prior to flows reducing to the trigger value. For example, if a river flow is reducing rapidly, a higher stage or suspension will be put in place before the trigger level is reached to provide for adequate flow for domestic and stock use and the environment.

3. Compliance Point

There is a surface water monitoring station located Byrne Gully Road, which is Reedy Creek @ Woolshed (Station No. 403221).

4. Licences

Licence Allocation in Reedy Creek and Tributaries

Licence Type	Number of Licences	Volume (ML)
Irrigation	55	478.4
Registered Dams	27	632
Total	82	1110.4

5. Additional Information

Stream codes and sustainable diversion limit zones are provided within this document for identification purposes when discussing the catchment diversion management with Goulburn-Murray Water Officers.

Stream Codes

Stream codes used in the management of the Reedy Creek and Tributaries.

4030455 4030465

Sustainable Diversion Limit zones

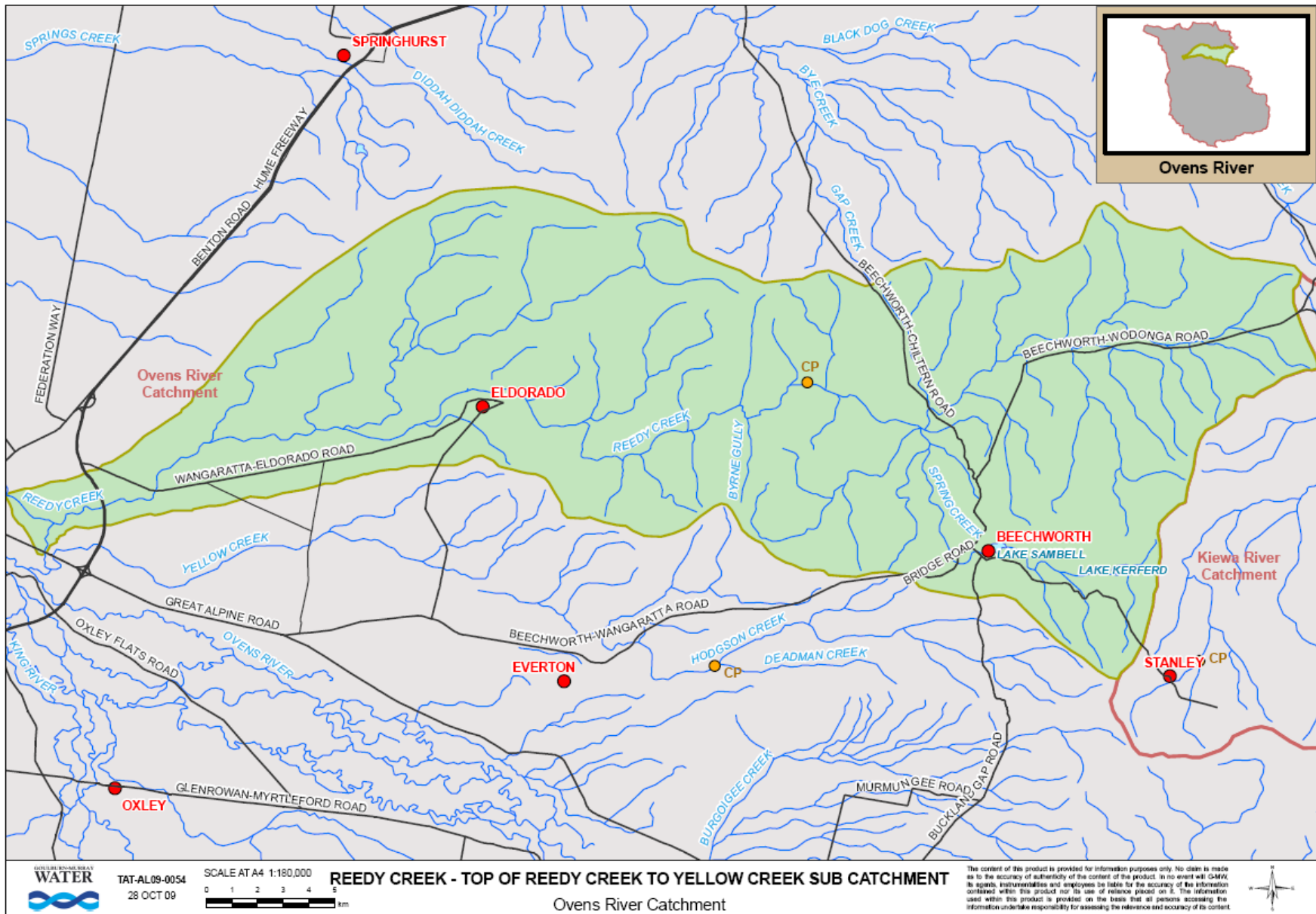
Sustainable Diversion Limit zones used in the management of surface water trade within the Reedy Creek catchment:

4030906, 403905, 4030904, 4030903, 4030902, 4030901

For general information call or visit

1800 013 357

www.g-mwater.com.au



TAT-AL09-0054
28 OCT 09

SCALE AT A4 1:180,000
0 1 2 3 4 5 km

REEDY CREEK - TOP OF REEDY CREEK TO YELLOW CREEK SUB CATCHMENT
Ovens River Catchment

The content of this product is provided for information purposes only. No claim is made as to the accuracy or authenticity of the content of the product. In no event will GMRW, its agents, instrumentalities and employees be liable for the accuracy of the information contained within this product nor its use of reliance placed on it. The information used within this product is provided on the basis that all persons accessing the information undertake responsibility for assessing the relevance and accuracy of its content.

