

SANDY CREEK CATCHMENT LOCAL MANAGEMENT RULES



1. Catchment Information

The Sandy Creek flows into Lake Hume catchment just to the south of the Murray Valley Highway, and encompasses an area of approximately 106 km². The mean annual flow at the bottom of the Sandy Creek catchment is approximately 23,210 ML/yr. The North East Regional River Health Strategy lists the Lake Hume Tributaries Management Unit as it contains significant environmental values, including Murray Spiny Cray, Mountain Galaxias and Bluenose Cod. Key issues identified within the catchment are exotic flora, stock access, sediment input, barriers to fish migration and water quality.

The catchment is bound to the west by the Kiewa River catchment and the east by the Mitta Mitta River catchment. Significant tributaries of Sandy Creek include Lockhart and Wildhorse Creeks. The Sandy Creek catchment is predominantly cleared through most of the catchment, with only the very upper catchment being forested. The main industry within the catchment is dryland farming.

2. Management of Licences

Restriction Triggers for each stage of restriction.

Restriction Stages	Trigger Values for Introduction of Next Stage of Restriction	Percent Restrictable Demand
Stage 5 (Suspension)	<= 2 ML/Day	100%

Note: Restrictions are implemented during dry periods prior to flows reducing to the trigger value. For example, if a river flow is reducing rapidly, a higher stage or suspension will be put in place before the trigger level is reached to provide for adequate flow for domestic and stock use and the environment.

3. Compliance Point

Sandy Creek is visually assessed to 2 ML/Day at Lockhart Gap Road.

4. Licences

Licence Allocation in Sandy Creek and Tributaries

Licence Type	Number of Licences	Volume (ML)
Irrigation	18	98.7
Registered Dams	12	292
Total	30	390.7

5. Additional Information

Stream codes and sustainable diversion limit zones are provided within this document for identification purposes when discussing the catchment diversion management with Goulburn-Murray Water Officers.

Stream Codes

Stream codes used in the management of the Sandy Creek and Tributaries:
4010260

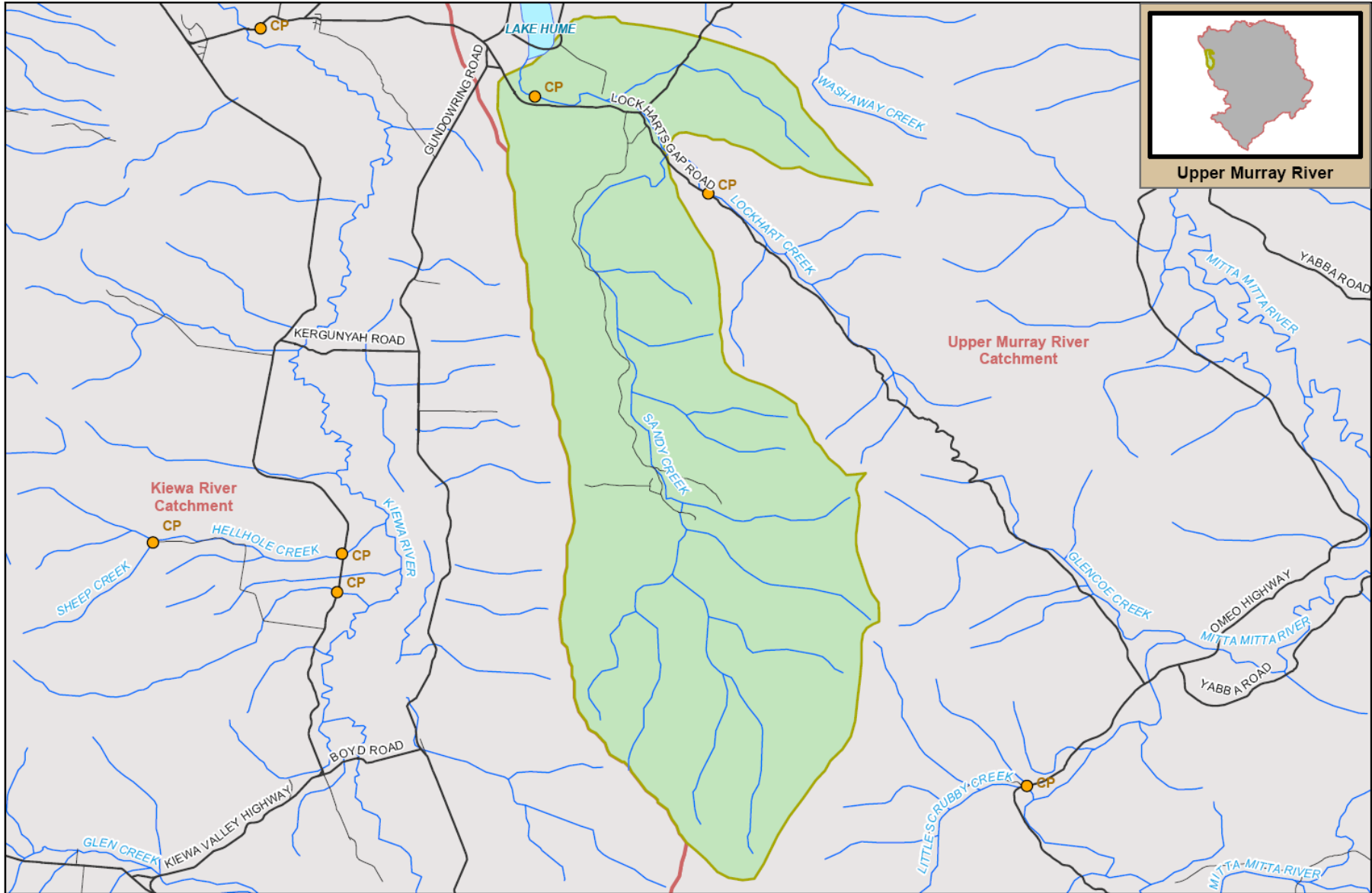
Sustainable Diversion Limit zones

Sustainable Diversion Limit zones used in the management of surface water trade within the Sandy Creek catchment:
4010804

For general information call or visit

1800 013 357

www.g-mwater.com.au



Upper Murray River

Upper Murray River Catchment

Kiewa River Catchment

SANDY CREEK SUB CATCHMENT
Upper Murray River Catchment



TAT-AL09-0054
28 OCT 09

SCALE AT A4 1:125,000
0 1 2 3 km

The content of this product is provided for information purposes only. No claim is made as to the accuracy or authenticity of the content of the product. In no event will G-MW, its agents, instrumentalities and employees be liable for the accuracy of the information contained within this product nor its use or reliance placed on it. The information used within this product is provided on the basis that all persons accessing the information undertake responsibility for assessing the relevance and accuracy of its content.

