

# SCRUBBY CREEK CATCHMENT LOCAL MANAGEMENT RULES



## 1. Catchment Information

The Scrubby Creek flows into the Hurdle Creek at Carboor Upper, and encompasses an area of approximately 23 km<sup>2</sup>. The mean annual flow at the bottom of the Scrubby Creek catchment is approximately 4,190 ML/yr. The North East Regional River Health Strategy lists the Lower King River Tributaries Management Unit as it contains significant environmental values including Mountain Galaxis and River Blackfish. Key issues identified within the catchment are bank erosion, bed instabilities, water quality, exotic flora, stock access and degraded riparian vegetation.

The catchment is bound to the east by the Buffalo River catchment and the west by the Meadow Creek catchment. The Scrubby Creek catchment is predominantly cleared along the creek flats and forested along the mountain ranges.

## 2. Management of Licences

Restriction Triggers for each stage of restriction.

Restriction Stages	Trigger Values for Introduction of Next Stage of Restriction	Percent Restrictable Demand
Stage 1 (Roster)	10 ML/day	0%
Stage 3	5 ML/day	50%
Stage 5 (Suspension)	<=2 ML/day	100%

**Note:** Restrictions are implemented during dry periods prior to flows reducing to the trigger value. For example, if a river flow is reducing rapidly, a higher stage or suspension will be put in place before the trigger level is reached to provide for adequate flow for domestic and stock use and the environment.

## 3. Compliance Point

The Scrubby Creek is managed in conjunction with Hurdle Creek, so its restrictions follow the restriction triggers used at the Hurdle Creek @ Bobinwarrah gauging station.

## 4. Licences

Licence Allocation in Scrubby Creek and Tributaries

Licence Type	Number of Licences	Volume (ML)
Irrigation	3	37
Registered Dams	3	150
<b>Total</b>	<b>6</b>	<b>187</b>

## 5. Additional Information

Stream codes and sustainable diversion limit zones are provided within this document for identification purposes when discussing the catchment diversion management with Goulburn-Murray Water Officers.

### Stream Codes

Stream codes used in the management of the Scrubby Creek and Tributaries:  
4035270

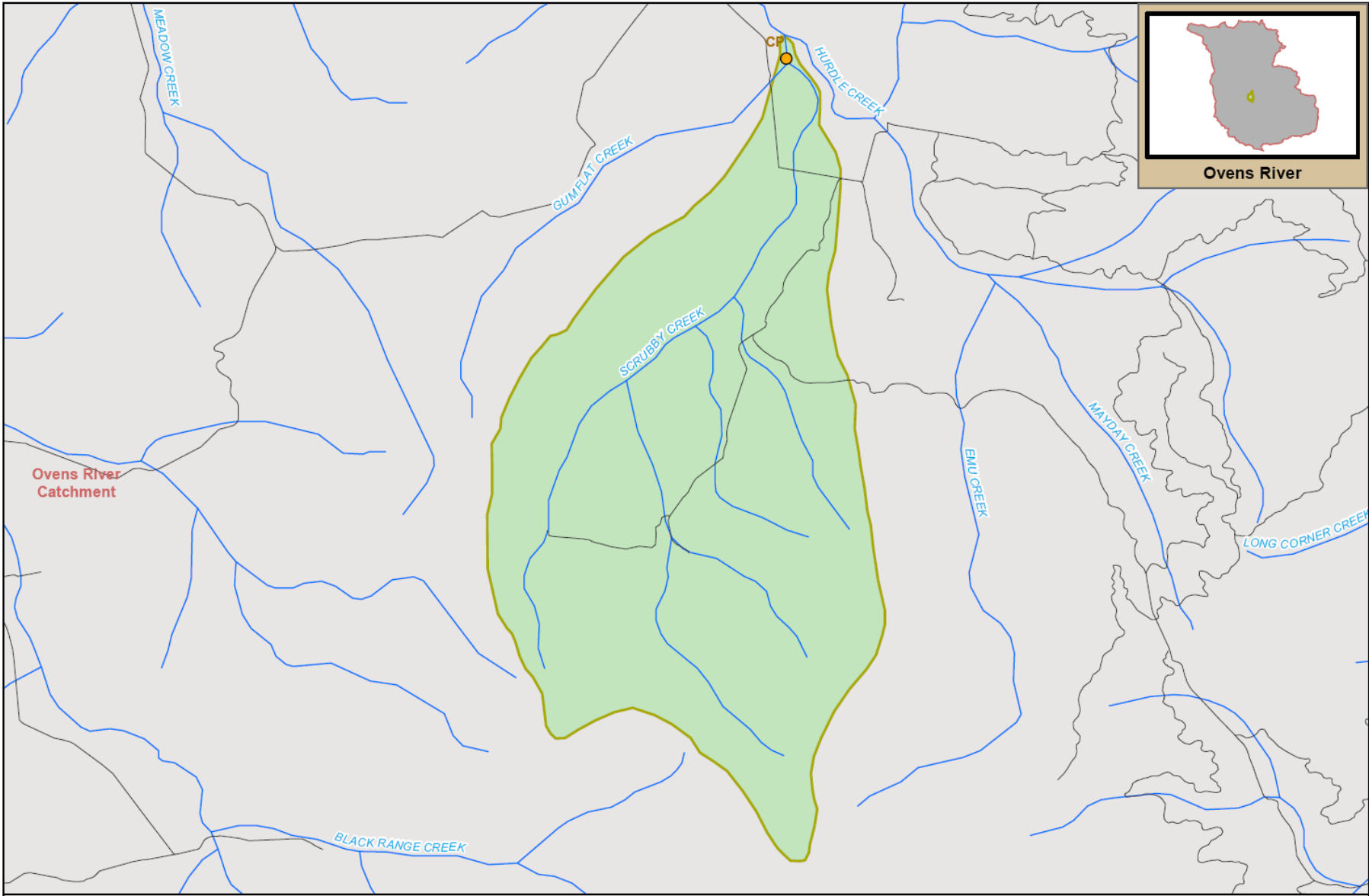
### Sustainable Diversion Limit zones

Sustainable Diversion Limit zones used in the management of surface water trade within the Scrubby Creek catchment:  
4030718

For general information call or visit

**1800 013 357**

[www.g-mwater.com.au](http://www.g-mwater.com.au)



TAT-AL09-0054  
28 OCT 09



**SCRUBBY CREEK - KING CATCHMENT SUB CATCHMENT**  
Ovens River Catchment

The content of this product is provided for information purposes only. No claim is made as to the accuracy or authenticity of the content of the product. In no event will G-MW, its agents, instrumentalities and employees be liable for the accuracy of the information contained within this product nor its use or reliance placed on it. The information used within this product is provided on the basis that all persons accessing the information undertake responsibility for assessing the relevance and accuracy of its content.

