

WILD DUCK CREEK CATCHMENT LOCAL MANAGEMENT RULES



1. Catchment Information

The Wild Duck Creek flows into Lake Eppalock reserve just downstream of Mia Mia–Derinal road, and encompasses an area of approximately 249 km². The mean annual flow at the bottom of the Wild Duck Creek catchment is approximately 26,750 ML/yr.

The catchment is bound to the west by the Campaspe River catchment and the east by the Goulburn River catchment. Significant tributaries of Wild Duck Creek include Pohlman, Back, Mountain and Goodall Creeks. The Wild Duck Creek catchment is predominantly cleared supporting mainly dryland farming.

2. Management of Licences

Restriction Triggers for each stage of restriction.

Restriction Stages	Trigger Values for Introduction of Next Stage of Restriction	Percent Restrictable Demand
Stage 5 (Suspension)	<= 3 ML/Day	100%

Note: Restrictions are implemented during dry periods prior to flows reducing to the trigger value. For example, if a river flow is reducing rapidly, a higher stage or suspension will be put in place before the trigger level is reached to provide for adequate flow for domestic and stock use and the environment.

3. Compliance Point

There is a surface water monitoring station located upstream of the Heathcote-Redesdale Road. The station is called Wild Duck Creek @ U/S of Heathcote – Mia Mia Road (Staiton No. 406235).

4. Licences

Licence Allocation in Wild Duck Creek and Tributaries

Licence Type	Number of Licences	Volume (ML)
Irrigation	8	35
Registered Dams	14	210.1
Total	22	245.1

5. Additional Information

Stream codes and sustainable diversion limit zones are provided within this document for identification purposes when discussing the catchment diversion management with Goulburn-Murray Water Officers.

Stream Codes

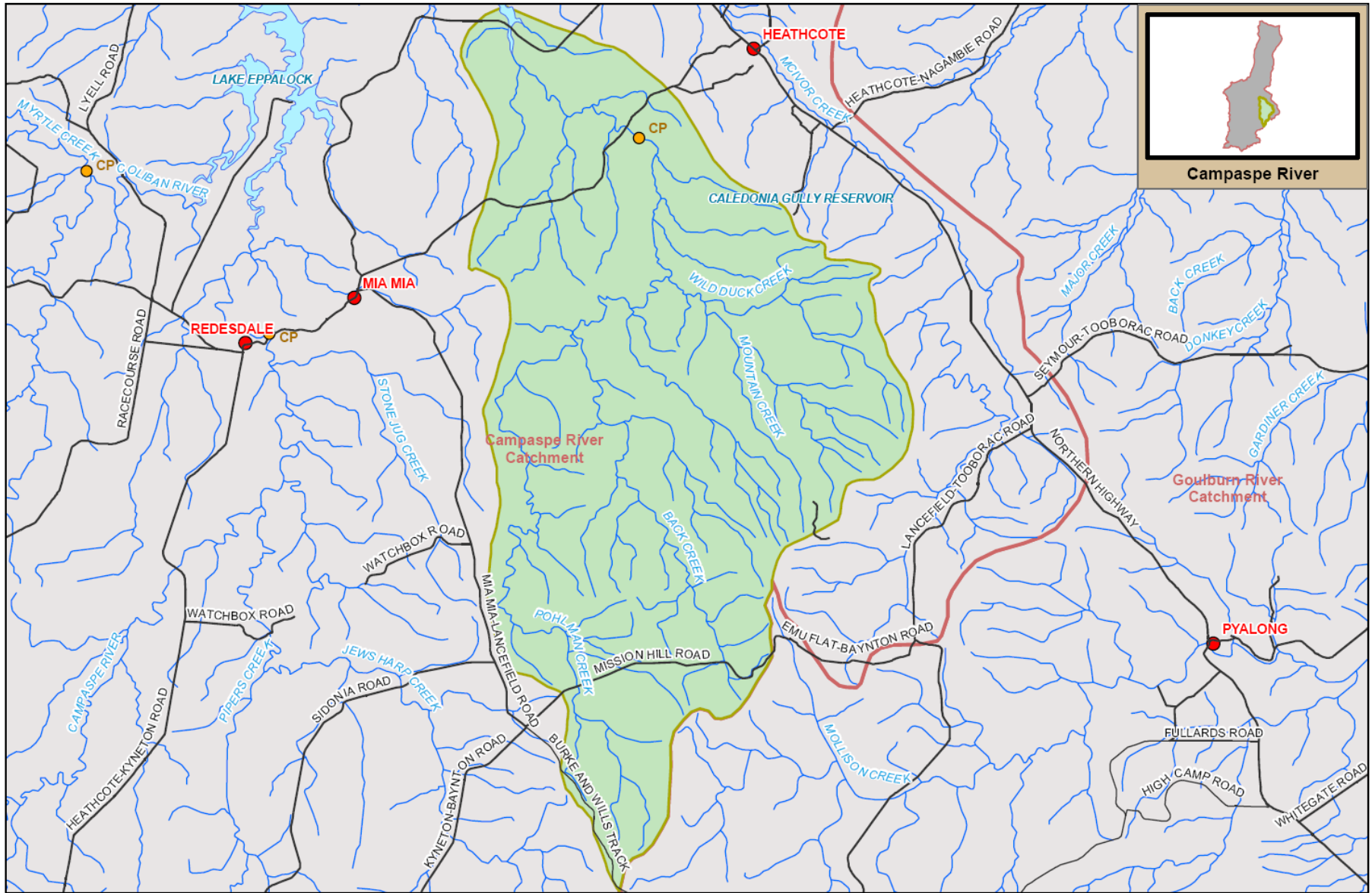
Stream codes used in the management of the Wild Duck Creek and Tributaries:
4060180

Sustainable Diversion Limit zones

Sustainable Diversion Limit zones used in the management of surface water trade within the Wild Duck Creek catchment:
4060201 4060202 4060203

For general information call or visit
1800 013 357

www.g-mwater.com.au



Campaspe River



TAT-AL09-0054
26 OCT 09

SCALE AT A4 1:180,000
0 1 2 3 4
km

WILD DUCK CREEK SUB CATCHMENT
Campaspe River Catchment

The content of this product is provided for information purposes only. No claim is made as to the accuracy or authenticity of the content of the product. In no event will G-MW, its agents, instrumentalities and employees be liable for the accuracy of the information contained within this product nor its use or reliance placed on it. The information used within this product is provided on the basis that all persons accessing the information undertake responsibility for assessing the relevance and accuracy of its content.

