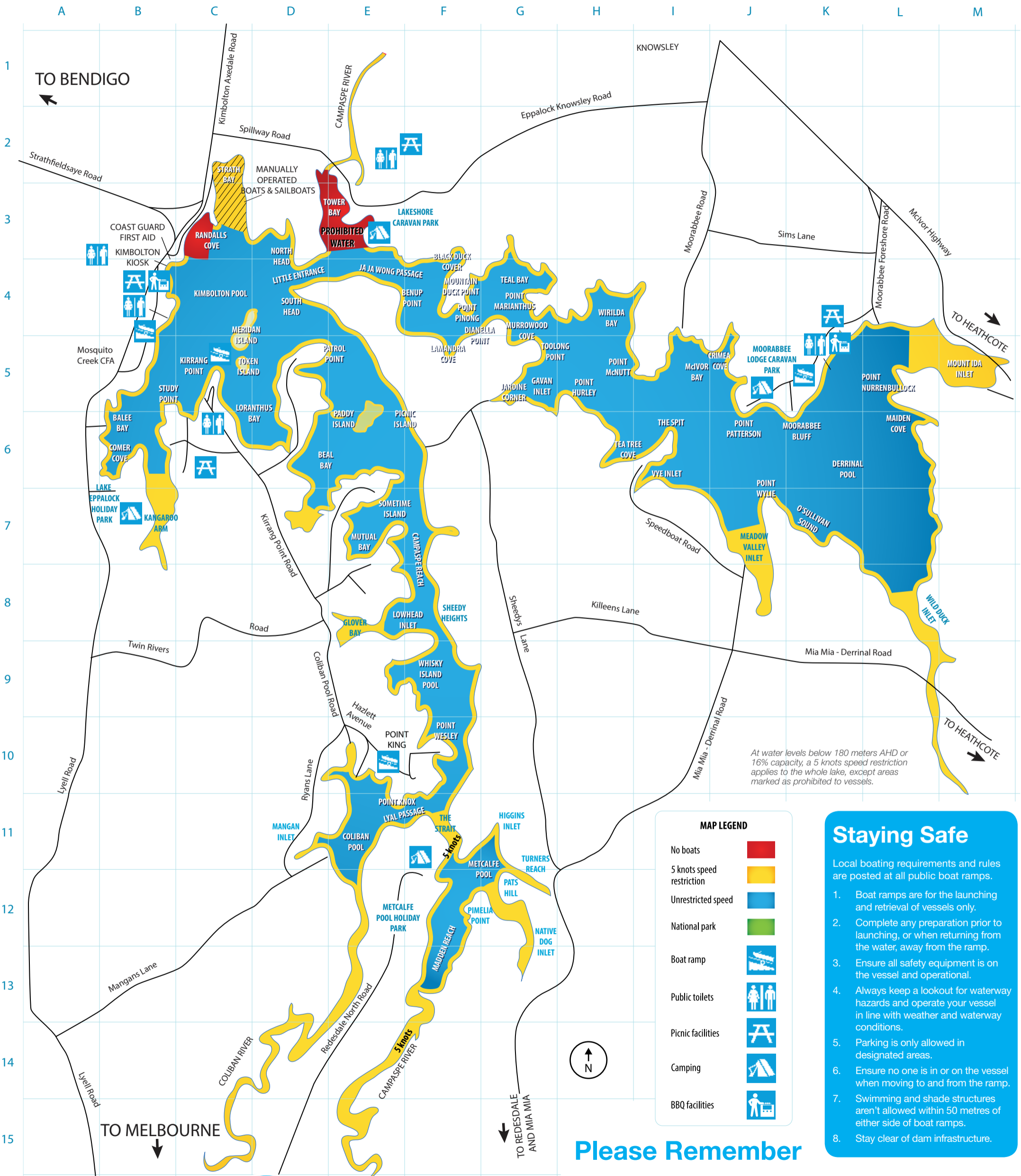


Lake Eppalock boating and facilities guide



0 km 1 km 2 km
Scale of Kilometres

Boats containing sleeping accommodation and/or toilets are prohibited on Lake Eppalock.
Parasailing is prohibited without prior written consent by GMW.



At water levels below 180 meters AHD or 16% capacity, a 5 knots speed restriction applies to the whole lake, except areas marked as prohibited to vessels.

MAP LEGEND

- No boats ■
- 5 knots speed restriction ■
- Unrestricted speed ■
- National park ■
- Boat ramp
- Public toilets
- Picnic facilities
- Camping
- BBQ facilities

Staying Safe

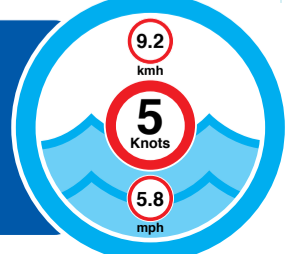
- Local boating requirements and rules are posted at all public boat ramps.
1. Boat ramps are for the launching and retrieval of vessels only.
 2. Complete any preparation prior to launching, or when returning from the water, away from the ramp.
 3. Ensure all safety equipment is on the vessel and operational.
 4. Always keep a lookout for waterway hazards and operate your vessel in line with weather and waterway conditions.
 5. Parking is only allowed in designated areas.
 6. Ensure no one is in or on the vessel when moving to and from the ramp.
 7. Swimming and shade structures aren't allowed within 50 metres of either side of boat ramps.
 8. Stay clear of dam infrastructure.



Please Remember

- No camping or fires allowed on GMW foreshore land.
- Confine vehicles and motor bikes to formed public roads.
- Take your rubbish home.

On inland waters a 5 knot speed limit applies within 50 metres (except where otherwise indicated) of the water's edge, other vessels, navigation aids, swimmers and fixed or floating structures.
Current water levels can be found at www.gmwater.com.au/water-levels



Scan to visit the Lake Eppalock interactive water tool

<http://bit.ly/LakeEppalockLevels>