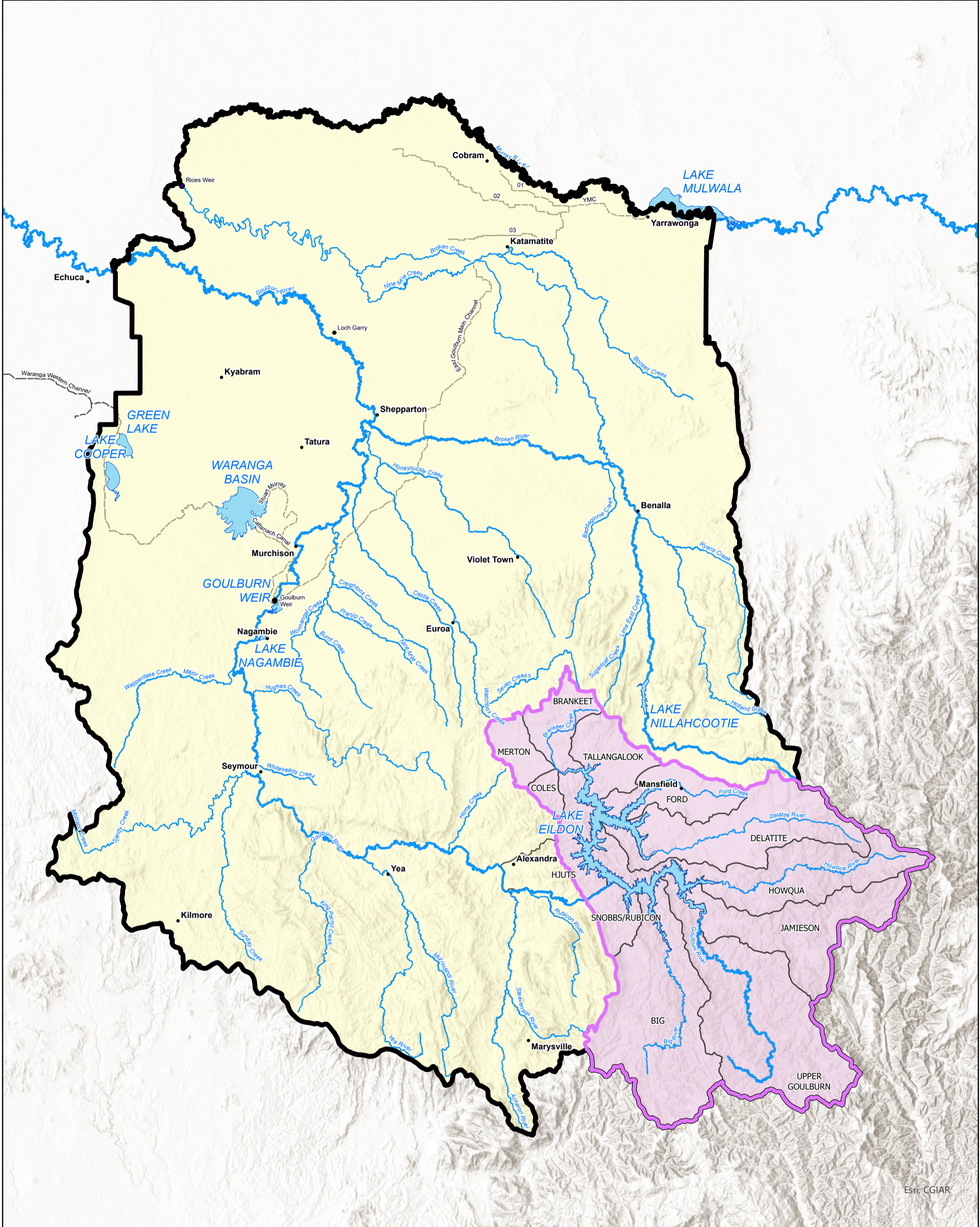


GOULBURN-BROKEN CATCHMENT

GOULBURN-MURRAY WATER



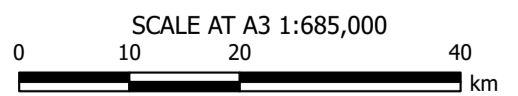
Esri, CGIAR

63603
30 June 2023

GOULBURN-MURRAY WATER
40 CASEY STREET (PO BOX 165)
TATURA VIC 3616
GISsupport@gmwater.com.au



- Goulburn-Broken CMA
- Eildon Catchment
- Eildon Subcatchments



The content of this product is provided for information purposes only. No claim is made as to the accuracy or authenticity of the content of the product. In no event will G-MW, its agents, instrumentalities and employees be liable for the accuracy of the information contained within this product nor its use of reliance placed on it. The information used within this product is provided on the basis that all persons accessing the information undertake responsibility for assessing the relevance and accuracy of its content.

Z:\2023_Products\63603\63603.aprx